

NEW  
T1

# New Terminal 1 Update

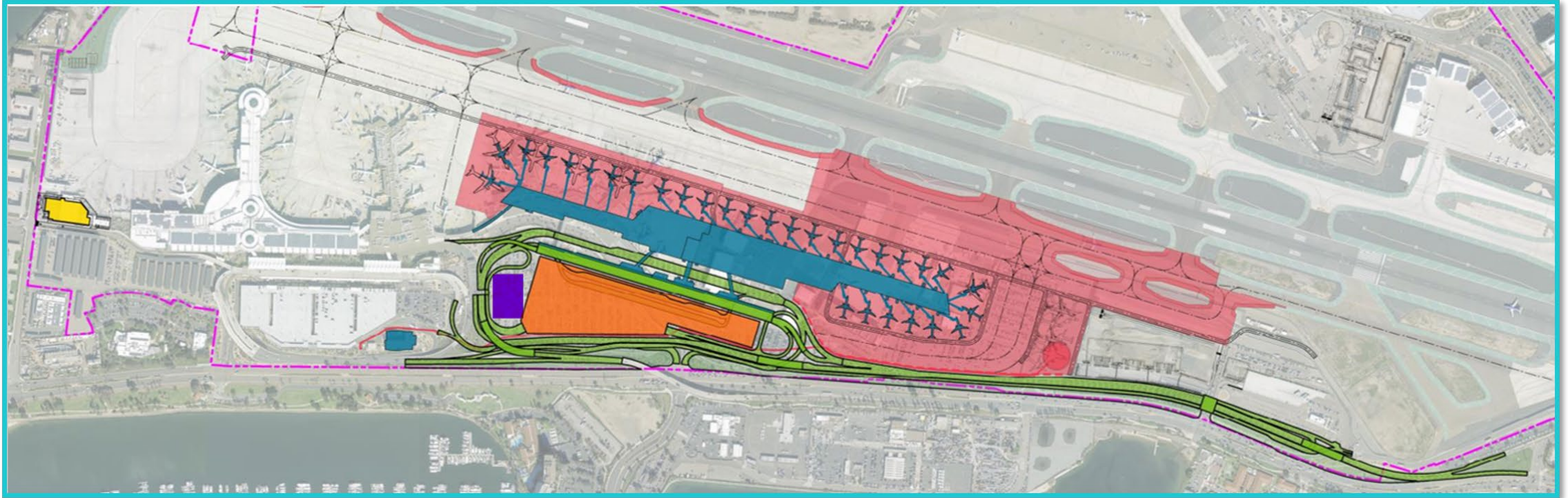


**Serena Hendle**  
San Diego County Regional Airport Authority  
October 11, 2023



# New T1 Overall Project Scope

NEW  
T1



- Terminal & Roadways
- Airside Improvements
- Administration Building
- Future Transit Station



# Renderings

NEW  
T1



Arrivals Roadway



Arrivals Curbside



# Renderings

NEW  
T1



Ticketing Area



Outdoor Seating Terrace



# Renderings

NEW  
T1



Baggage Claim



Parking Plaza

# Concessions

# Concessions Development By the Numbers

19

New Locations  
to Open in 2025

10

New Locations  
to Open in 2028

32K

New Square Feet  
of Restaurants

14K

New Square Feet  
of Retail

250

% Increase in Space  
vs. Current T1





# Taste of San Diego & Beyond

NEW  
T1





# Representing Pacific Beach

NEW  
T1



## MR. MOTO PIZZA

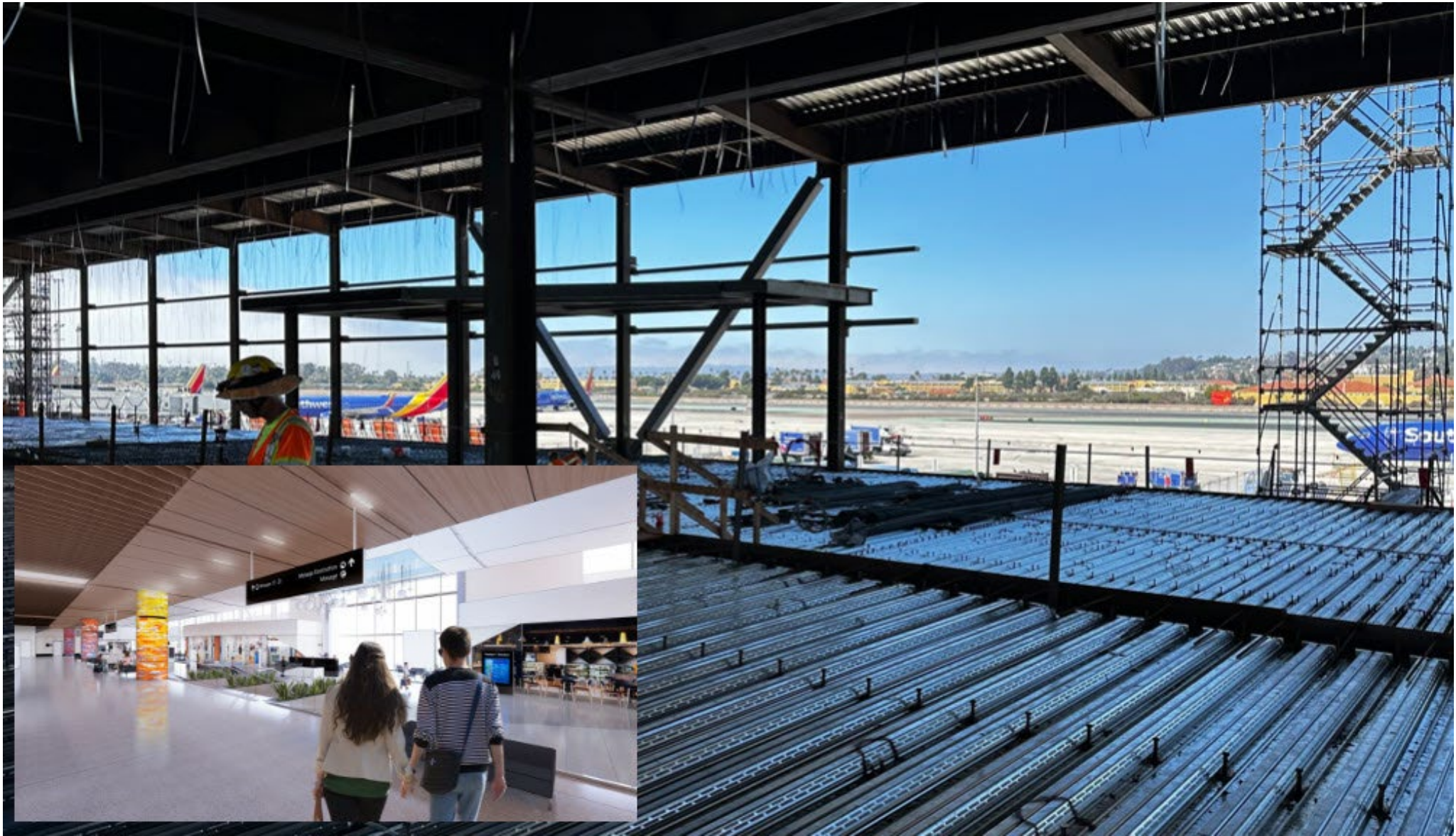
Established in Pacific Beach in 2015  
Nine Locations in San Diego

# Construction



















# Construction Impacts

NEW  
T1

## Parking:

- Closure of Terminal 1 parking lot
- Cell Phone Lot relocation to T2 West parking lot

## Re-routes/detours:

- Traffic switch taking effect end of Oct through mid November.
- North Harbor Drive reduces to 3 lanes prior to opening.

# Stay Connected



<b>Email</b>	Go in the Know email newsletter (opt in)	
	New T1 Navigator (opt in)	
	NewT1Info@san.org	
<b>Social media</b>	Twitter	@SanDiegoAirport
	Facebook	/SanDiegoAirport
	Instagram	@SanDiegoAirport
<b>Website</b>	NewT1.com	
	San.org	
<b>Mobile</b>	Opt-in text messaging	Text UPDATES to 36017







**Thank You!**